

SIMCO - Standard Injection Molding Co.

2027 State Rd. 64 West

P.O. Box 997

Avon Park, FL 33826 US

Phone: 800-780-9090 • Fax: 863-452-6200

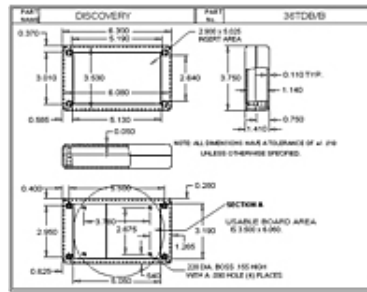
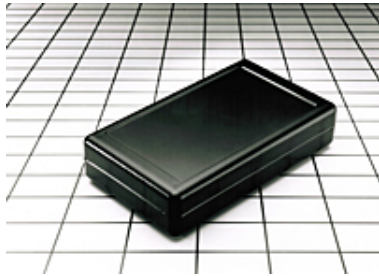
E-Mail: simco@simcobox.com • Web site:www.simcobox.com

Item # 36TDB, Discovery 36 Series - Hand Held Cases

\$4.65

Discovery 36 Series - Hand Held Cases

Flat Top, Deep Bottom



SPECIFICATIONS

Type	Standard Enclosure
Material	94HB
Height	1.410 in 35.814 mm
Width	3.750 in 95.250 mm
Length	6.310 in 160.274 mm
Screws	4
Standard Screws	S-7
Screw Size	4 x 9/16 in
Colors	Black PC Bone Grey
Note	Dark Grey is available but needs to be purchased as UL.
Features	Deep Bottom Flat Top

Options	PC Board Bosses
Additional Options	PMB-125, Glue-in Mounting Boss (\$0.12) S-14, PC board screws (\$0.02)