

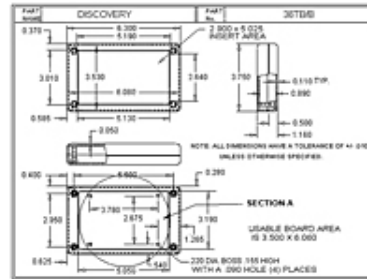
**SIMCO - Standard Injection Molding Co.**  
 2027 State Rd. 64 West  
 P.O. Box 997  
 Avon Park, FL 33826 US  
**Phone:** 800-780-9090 • **Fax:** 863-452-6200  
**E-Mail:** simco@simcobox.com • **Web site:** www.simcobox.com

**Item # 36TB, Discovery 36 Series - Hand Held Cases**

**\$4.65**

**Discovery 36 Series - Hand Held Cases**

**Flat Top, Shallow Bottom**



**SPECIFICATIONS**

Type	Standard Enclosure
Material	94HB
Height	1.150 in 29.210 mm
Width	3.750 in 95.250 mm
Length	6.310 in 160.274 mm
Screws	4
Standard Screws	S-7
Screw Size	4 x 9/16 in
Colors	Black PC Bone Grey
Note	Dark Grey is available but needs to be purchased as UL.
Features	Flat Top Shallow Bottom

Options	PC Board Bosses
Additional Options	PMB-125, Glue-in Mounting Boss (\$0.12) S-14, PC board screws (\$0.02)