

**SIMCO - Standard Injection Molding Co.**

2027 State Rd. 64 West

P.O. Box 997

Avon Park, FL 33826 US

Phone: 800-780-9090 • Fax: 863-452-6200

E-Mail: simco@simcobox.com • Web site:www.simcobox.com

**Item # 120X44, 4 Outlet Electrical Boxes**

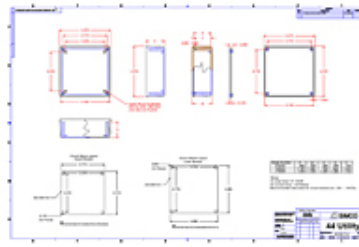
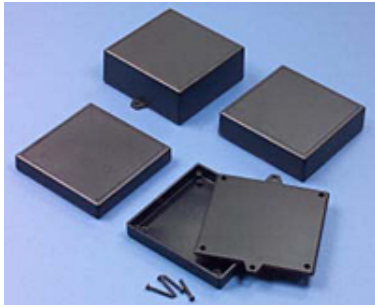
**\$4.10**

**4 Outlet Electrical Boxes**

These new SATURN Utility Boxes have an added benefit that is conducive to many electrical applications. The cases measure 4.38" x 4.38" and are just the right size to install directly over a standard 4 outlet electrical box or outlet. For any wall application the cases can be installed using the optional wall mounting tabs. Or, they can be installed directly over a standard 4 outlet electrical box by drilling through the PC Board screw bosses.

These unique enclosures are suitable for a variety of housing requirements in addition to wall mounted or electrical applications. They feature a molded top cover in three different heights and a flat molded bottom. PC board mounting bosses are moded-in in all models. The boxes assemble easily using the four Plastite screws that are included.

*Custom Machining and Printing are available. Please call for more information.*



[SPECIFICATIONS](#) · [FEATURES](#)

**SPECIFICATIONS**

Material	94HB
Height	1.225 in 31.115 mm
Width	4.375 in 111.125 mm
Length	4.375 in 111.125 mm
Colors	Black PC Bone Grey
Screws	4
Standard Screws	S-7
Screw Size	4 x 9/16 in

Options	Mount Tabs
Additional Options	PMB-125, Glue-in Mounting Boss (\$0.12) S-14, PC board screws (\$0.02)
Note	Dark Grey is available but needs to be purchased as UL.
Features	PC Board Bosses

---

## FEATURES

- High impact material
  - Plastite screws
  - With or without mount tabs\*
  - PC board provisions
  - Easily machined
  - **Colors:** Black, Dark Grey, PC Bone Grey
-