

SIMCO - Standard Injection Molding Co.

2027 State Rd. 64 West

P.O. Box 997

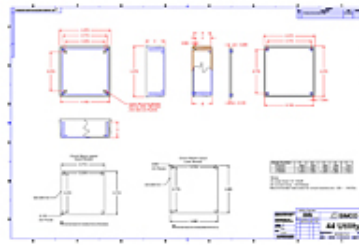
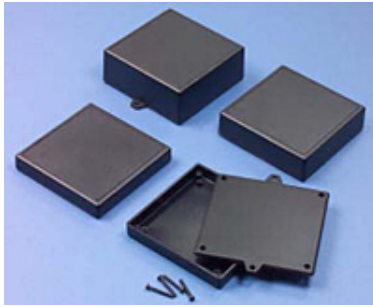
Avon Park, FL 33826 US

Phone: 800-780-9090 • **Fax:** 863-452-6200**E-Mail:** simco@simcobox.com • **Web site:** www.simcobox.com**Item # 075X44, 4 Outlet Electrical Boxes****\$3.90****4 Outlet Electrical Boxes**

These new SATURN Utility Boxes have an added benefit that is conducive to many electrical applications. The cases measure 4.38" x 4.38" and are just the right size to install directly over a standard 4 outlet electrical box or outlet. For any wall application the cases can be installed using the optional wall mounting tabs. Or, they can be installed directly over a standard 4 outlet electrical box by drilling through the PC Board screw bosses.

These unique enclosures are suitable for a variety of housing requirements in addition to wall mounted or electrical applications. They feature a molded top cover in three different heights and a flat molded bottom. PC board mounting bosses are molded-in in all models. The boxes assemble easily using the four Plastite screws that are included.

Custom Machining and Printing are available. Please call for more information.



· [SPECIFICATIONS](#) · [FEATURES](#)

SPECIFICATIONS

Material	94HB
Height	0.725 in 18.415 mm
Width	4.375 in 111.125 mm
Length	4.375 in 111.125 mm
Colors	Black PC Bone Grey
Screws	4
Standard Screws	S-7
Screw Size	4 x 9/16 in

Options	Mount Tabs
Additional Options	PMB-125, Glue-in Mounting Boss (\$0.12) S-14, PC board screws (\$0.02)
Note	Dark Grey is available but needs to be purchased as UL.
Features	PC Board Bosses

FEATURES

- High impact material
 - Plastite screws
 - With or without mount tabs*
 - PC board provisions
 - Easily machined
 - **Colors:** Black, Dark Grey, PC Bone Grey
-