



SIMCO

STANDARD INJECTION MOLDING COMPANY



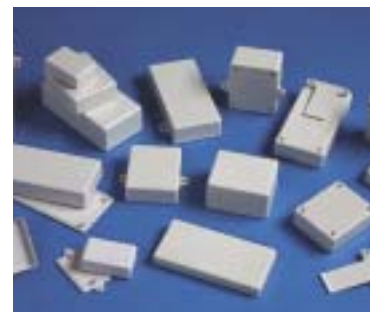
Pocket Size Enclosures



Desktop Housings



Handheld Cases



Utility Boxes



Dress it with a SIMCO housing ...



and see how good you look!



2004 PRODUCT SELECTION GUIDE FOR PLASTIC ENCLOSURES

PRECISION ENCLOSURES TO ENHANCE YOUR PRODUCTS

The housing for an instrument or product is an integral part of its design, playing a key role in its looks, presentation, value and quality perception. It should compliment and enhance the product in every possible way. The enclosure that houses a product is its first (visual) introduction. That is why it is important to choose an enclosure that creates and projects the right image for both the product and the company it represents.

The beauty and durability of molded plastics are qualities that are appreciated by today's consumer. SIMCO enclosures are manufactured using only the finest grades of material and are molded to strict specifications. Our enclosures are rugged, functional and aesthetically pleasing. And, they are surprisingly low-cost. These advantages make SIMCO enclosures the smartest and most logical choice for all your enclosure needs – from prototype to production.

INTRODUCTION

SIMCO was established in 1982 and has been providing quality enclosures to the OEM for more than 20 years. Our sister company, SIMCO Machine & Tool was formed a few years later to enhance the company's ability to build new molds and tools to meet the growing demand for new size requirements. All of our 80 + enclosures are manufactured in our Central Florida location and are available off-the-shelf.

Because we are the manufacturer, we are able to offer lower prices and a faster, more one-on-one response time for all of your enclosure needs. Whether you need a standard enclosure shipped within 24 hours, or a timely solution to a packaging challenge, SIMCO is the right choice.

Bringing your product to market has never been easier.

SIMCO's design team can assist you in selecting the right enclosure for your project and offer expert advice on cost effective modifications for a customized fit. Simply choose the size closest to your needs from our Quick Dimensions Chart on page 3. Free samples and user drawings are available on request. You are guaranteed quality product, excellent service and a complete dedication to customer satisfaction from our friendly SIMCO sales staff.

CONTENTS	PAGE #
<i>Company Information</i>	<i>2</i>
<i>Dimension Chart</i>	<i>3</i>
<i>SATURN Series</i>	<i>4&5</i>
<i>Utility Boxes</i>	<i>4&5</i>
<i>ENDEAVOR Series</i>	<i>6</i>
<i>Pocket Size Enclosures</i>	<i>6</i>
<i>DISCOVERY Series</i>	<i>7</i>
<i>Handheld Cases</i>	<i>7</i>
<i>CHALLENGER Series</i>	<i>8</i>
<i>Desktop Housings</i>	<i>8</i>
<i>Accessories</i>	<i>9</i>
<i>Value Added Services</i>	<i>10</i>
<i>How to Order</i>	<i>11</i>

Here's how to contact us!

Ph: (800) 780-9090 (863) 452-9090

FAX: (863) 452-6200

email: simco@simcobox.com



**P.O. Box 997
AVON PARK, FLORIDA 33826**

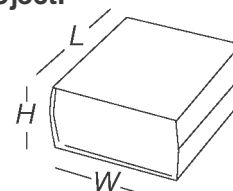
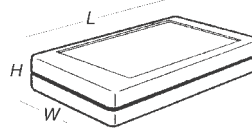
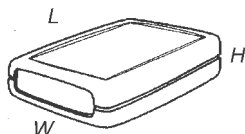
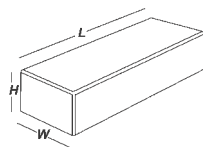
Be sure to visit our website at www.simcobox.com



QUICK DIMENSION CHART

Style	Outside Dimensions (inches)			Battery Access	Drop-In Panel	Wall Mount	Mounting Bracket	Tilt Stand	Belt Clip	Number of Models	Page Number
	Height	Width	Length								
Utility	0.650	2,500	3,000			X			X	2	4
Utility	0.650	2,530	5,050	X		X			X	2	4
Utility	0.725	4,375	4,375			X				2	4
Utility	0.785	1,510	2,260			X				2	4
Utility	0.940	2,305	1,800							1	5
Pocket	1.000	2,825	4,120	X	X				X	4	6
Utility	1.020	2,500	3,000			X			X	2	4
Utility	1.040	2,530	5,050	X		X			X	2	4
Utility	1.105	2,045	6,025							1	4
Utility	1.140	1,800	4,260							1	5
HandHeld	1.150	3,110	8,550	X						2	7
HandHeld	1.150	3,750	6,310							2	7
Utility	1.225	4,375	4,375			X				2	4
Pocket	1.310	2,970	4,850	X	X					4	6
HandHeld	1.410	3,110	8,550	X						2	7
HandHeld	1.410	3,750	6,310	X						8	7
Utility	1.530	2,500	3,000							1	5
Utility	1.500	2,530	5,050	X						1	5
Desk Top	1.530	5,080	5,300		X					1	8
Desk Top	1.530	7,060	5,300		X					1	8
Desk Top	1.550	6,330	9,620		X					1	8
Utility	1.620	2,500	3,000			X				2	4
Utility	1.620	2,530	5,050			X				2	4
Utility	1.725	4,375	4,375			X				2	4
HandHeld	1.700	3,750	6,310	X						2	7
Utility	1.880	2,530	5,050							1	5
Utility	1.895	2,500	3,000							1	5
HandHeld	1.960	3,750	6,310							8	7
Desk Top	2.040	5,080	5,300		X		X			1	8
Desk Top	2.040	7,060	5,300		X		X			1	8
Utility	2.470	2,530	5,050							1	5
Utility	2.500	2,500	3,000							1	5
Desk Top	2.520	6,120	6,320		X		X	X		1	8
Desk Top	2.520	8,100	6,320		X		X	X		1	8
Desk Top	3.300	6,120	6,320		X		X	X		1	8
Desk Top	3.300	8,100	6,320		X		X	X		1	8
Desk Top	3.600	6,120	6,320		X		X	X		1	8
Desk Top	3.600	8,100	6,320		X		X	X		1	8
Desk Top	4.040	6,120	6,320		X		X	X		1	8
Desk Top	4.040	8,100	6,320		X		X	X		1	8
Desk Top	4.250	9,300	10,930		X					2	8

Use this chart to find the SIMCO enclosure size that is closest to your requirements. Choose the desired height as a starting point; then, select the style and options that best suit your project.



UTILITY BOXES

POCKET SIZE ENCLOSURES

HANDHELD CASES

DESKTOP HOUSINGS



P.O. Box 997, Avon Park, Florida 33826

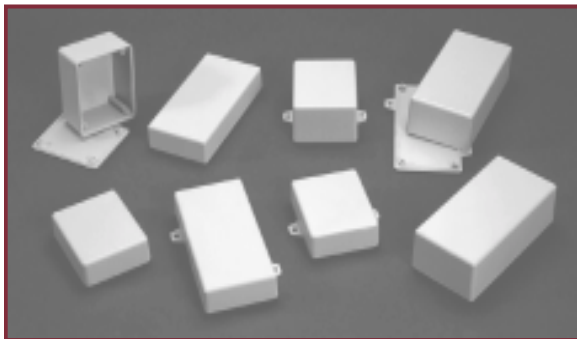
Tel: (863) 452-9090 • Fax: (863) 452-6200 • 800-780-9090 • email: simco@simcobox.com



THE SATURN SERIES

The smallest enclosures in the SIMCO line, the SATURN Series offers a practical, economical packaging solution for small electronic devices or circuitry. The boxes have smooth rounded corners and a satin finish to resist scuffs and smudges. The top and bottom covers have PC board mounting provisions between the screw bosses to utilize space and for ease of assembly. Some can be ordered with external mounting tabs for wall mounting. A few have Battery access doors. SIMCO's BC-1 Belt Clip will fit some models.

UTILITY BOXES



Model Number		Height	Width	Length	Options		
					Mount Tabs	Belt Clip	Battery
050X23	Inches	0.650	2.500	3.000	X	X	
	mm	16.510	63.500	76.200			
050X25	Inches	0.650	2.530	5.050	X	X	X
	mm	16.510	64.260	128.270			
075X12	Inches	0.785	1.510	2.260	X	X	
	mm	19.930	38.350	57.400			
100X23	Inches	1.020	2.500	3.000	X	X	
	mm	25.900	63.500	76.200			
100X25	Inches	1.040	2.530	5.050	X	X	X
	mm	26.410	64.260	128.270			
115X26	Inches	1.105	2.045	6.025			
	mm	28.067	51.943	153.035			
160X23	Inches	1.620	2.500	3.000	X	X	
	mm	41.140	63.500	76.200			
160X25	Inches	1.620	2.530	5.050	X	X	X
	mm	41.140	64.260	128.270			

These utility boxes feature a flat bottom cover and molded top cover. Most are available with or without external wall mounting tabs. To order with mounting tabs add /M to the part number. Example: Order number for the 050X23 with mounting tabs would be 050X23/M. A few are available with battery door access. To order with battery access, add /BA to the part #.



Model Number		Height	Width	Length	Options
					Mount Tabs
075X44	Inches	0.725	4.375	4.375	X
	mm	18.415	111.125	111.125	
120X44	Inches	1.225	4.375	4.375	X
	mm	31.115	111.125	111.125	
170X44	Inches	1.725	4.375	4.375	X
	mm	43.815	111.125	111.125	

These new SATURN Utility Boxes have an added benefit that is conducive to many electrical applications. The cases measure 4.38" x 4.38" and are just the right size to install directly over a standard 4 outlet electrical box or outlet. For any wall application the cases can be installed using the optional wall mounting tabs. Or, they can be installed directly over a standard 4 outlet electrical box by drilling through the screw bosses. To order with optional mount tabs, add /M to part #.

These unique enclosures are suitable for a variety of housing requirements in addition to wall mounted or electrical applications. They feature a molded top cover in three different heights and a flat molded bottom. PC board mounting bosses are available in all models. The boxes assemble easily using the four Plastite® screws that are included.

➤ To view or download user drawings of these enclosures visit our web site at www.simcobox.com or contact customer service at numbers listed below.



THE SATURN SERIES



Model Number		Height	Width	Length	Options	
					Mount Tabs	Belt Clip
150X23	Inches	1.53	2.50	3.00		X
	mm	38.86	63.50	76.20		
150X25	Inches	1.50	2.53	5.05		X
	mm	38.10	64.26	128.27		
190X23	Inches	1.90	2.50	3.00		X
	mm	48.13	63.50	76.20		
190X25	Inches	1.88	2.53	5.05		X
	mm	47.75	64.26	128.27		
250X23	Inches	2.50	2.50	3.00		X
	mm	63.50	63.50	76.20		
250X25	Inches	2.47	2.53	5.05		X
	mm	62.74	64.26	128.27		

For small housing requirements these mini-boxes offer more design options. They feature a deeper bottom than the wall mount cases and are available with PC board mounting bosses molded in the bottom covers. The SIMCO BC-1 belt clip will fit all models.

BELT CLIP



BC-1 Belt/Pocket Clip

The BC-1 Belt Clip will fit many of the SATURN Utility Boxes. The clips fasten securely to belt or pocket for personal applications. The one-piece molded belt clip mounts easily to the back of the enclosure using the same screw bosses that are used to secure the case halves.



Model Number		Height	Width	Length
100X22	Inches	0.940	1.800	2.310
	mm	23.870	45.720	58.670
111X14	Inches	1.140	1.800	4.260
	mm	28.956	45.720	108.204

The 100X22 features a molded top and bottom that fit together snugly eliminating the need for screws. If needed, the top and bottom can be glued together for permanent closure. Or the two halves can be separated and used as potting boxes.

The 111X14 is a two-piece box that snaps together for easy access. PC Board mounting bosses are located in both halves.

FEATURES

- High-impact SIMPLAS® material
- Light satin texture to resist smudges
- Plastite® screws included (most models)
- PC board mounting provisions
- In-stock availability
- Stock Colors: PC Bone Grey, Black

AVAILABLE OPTIONS

- UL 94V0 Flame Retardant Material
- EMI/RFI Shielding
- Custom Colors
- Wall mount tabs (some models)
- Belt Clips (some models)
- Secondary Machining

➤ To view or download user drawings of these enclosures visit our web site at www.simcobox.com or contact customer service at numbers listed below.



THE ENDEAVOR SERIES

The **ENDEAVOR** Series is ideal for small pocket size electronic devices and circuitry. These small enclosures have a molded top and bottom cover. A drop-in panel is included on some models. All are available with or without battery access. An optional belt/pocket clip is available to fit some models. A few applications are medical instruments, programmable controllers, pagers, transmitters, etc. Two styles are available in the **ENDEAVOR** Series.

POCKET SIZE ENCLOSURES



	Height	Width	Length
Inches	1.00	2.825	4.120
mm	25.4	71.75	104.6

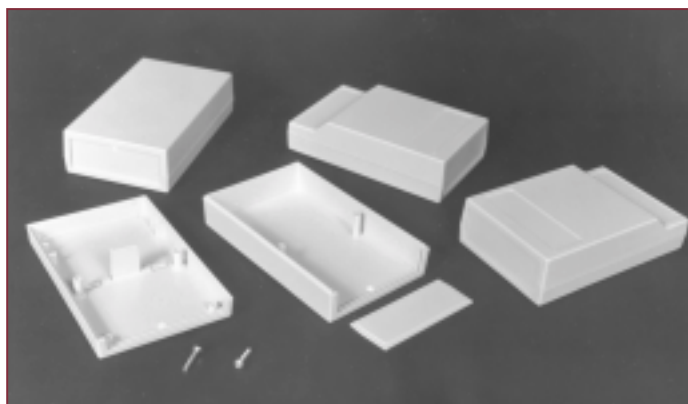
24 Series

These models measure 1.00" x 2.50" x 4.00". The ergonomic design features rounded corners, curved contours, and a slightly recessed area for key pads, overlays, etc. Other available features include a drop-in end panel and a slide-off battery access door that will accommodate most battery requirements. The SIMCO BC-1 Belt clip will fit all models.

Model Number	Description
24TBA	Plain Top, Battery Access
24TB	Plain Top, Plain Bottom
24TB/P	Plain Top, Plain Bottom with Panel
24TBA/P	Plain Top, Battery Access with Panel

35 Series

These larger pocket models measure 1.30" x 2.97 x 4.85. Choose a plain top or contour top with recessed areas for labels, imprinting, or custom modifications. Available with a generous battery compartment and slide-off battery access door. A drop-in end panel on one end is standard on all Models.



Model Number	Description
35CB	Contour Top, Plain Bottom
35TB	Plain Top, Plain Bottom
35CBA	Contour Top, Battery Access
35TBA	Plain Top, Battery Access

	Height	Width	Length
Inches	1.310	2.97	4.85
mm	33.27	75.43	123.19

FEATURES

- High-impact SIMPLAS material
- Lightly textured finish to resist scratching
- PC board mount provisions
- Easily machined or modified
- In-stock availability
- Plastite screws included
- Stock colors: PC Bone Grey, Dark Grey, Black

AVAILABLE OPTIONS

- UL 94VO Flame Retardant Material
- EMI/RFI shielding
- Custom colors
- Low cost tooling inserts
- Secondary Machining
- Custom Colors
- Belt clip (for some models)

➤ To view or download user drawings of these enclosures visit our web site at www.simcobox.com or contact customer service at numbers listed below.



THE DISCOVERY SERIES

The **DISCOVERY** Series is aesthetically pleasing and extremely versatile. Choose from sloped or plain styles with a myriad of battery compartment options. The molded top and bottom covers assemble easily. All have a smooth recessed area for graphics or overlays. A cleverly designed expander ring increases overall height and affords more size options. These cases are well suited for most any Handheld application.

36 Series

Model Number		Height	Width	Length	Battery Access	Slope Top
36SB	Inches	1.150	3.750	6.310		X
	mm	29.210	95.250	160.274		
36TB	Inches	1.150	3.750	6.310		
	mm	29.210	95.250	160.274		
36SDB	Inches	1.410	3.750	6.310		X
	mm	35.814	95.250	160.274		
36TDB	Inches	1.410	3.750	6.310		
	mm	35.814	95.250	160.274		
36S9VB	Inches	1.410	3.750	6.310	X	X
	mm	35.814	95.250	160.274		
36T9VB	Inches	1.410	3.750	6.310	X	
	mm	35.814	95.250	160.274		
36S2AB	Inches	1.410	3.750	6.310	X	X
	mm	35.814	95.250	160.274		
36T2AB	Inches	1.410	3.750	6.310	X	
	mm	35.814	95.250	160.274		
36S4AB	Inches	1.410	3.750	6.310	X	X
	mm	35.814	95.250	160.274		
36T4AB	Inches	1.410	3.750	6.310	X	
	mm	35.814	95.250	160.274		
36XR	Inches	0.550	3.825	6.380		
	mm	13.970	97.155	162.052		

HANDHELD CASES



These Handheld cases are available with many design options. The generous battery compartments will hold many different battery configurations. The 9VB will hold one 9 volt battery. The 2AB model will accommodate up to 2 AA or three AAA batteries. The 4 AB model can house as many as 4 AA or 5 AAA batteries. The Discovery Cases have PC board mounting provisions between top and bottom screw bosses. Or, they can be ordered with molded in PC board bosses in the bottom by adding /B to the part #. Example: To order the 36SB with molded-in bosses the part # would be 36SB/B.

The 36XR Xpander ring will fit all of the 36 Series. The ring fits easily between top and bottom covers and adds a half inch to the overall height. Longer case screws are provided to make assembly easy. To order Xpander rings with any 36 Series case simply add /XR to the part #. Example: Order # for the 36SB/B with Xpander ring would be 36SB/B/XR. The 36 Series comes with 4 Plastite® screws for easy assembly and self-adhesive clear rubber feet. Available in PC Bone Grey, Black, and Dark Grey.



38 Series

Model Number		Height	Width	Length	Battery Access
38TB	Inches	1.150	3.110	8.550	
	mm	29.210	78.994	217.170	
38TBA	Inches	1.150	3.110	8.550	X
	mm	29.210	78.994	217.170	
38TDB	Inches	35.814	3.110	8.550	
	mm	35.814	78.994	217.170	
38TDBA	Inches	1.410	3.110	8.550	X
	mm	35.814	78.994	217.170	

This larger Handheld Case is especially well suited for remote control devices, test equipment, security products, and more. The functional enclosure comes in two different sizes and both are available with or without battery door access. PC board mounting provisions are provided between the case screw bosses. These cases are available from stock in PC Bone Grey and Black.

➤ To view or download user drawings of these enclosures visit our web site at www.simcobox.com or contact customer service at numbers listed below.



THE CHALLENGER SERIES

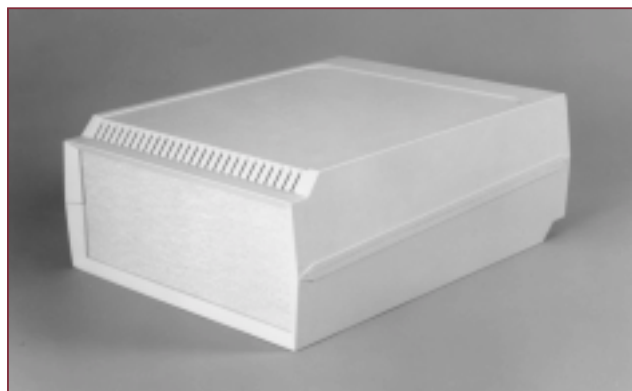
The **CHALLENGER** Series offers an attractive and rugged housing solution for desk or bench top applications, such as meters, test equipment, telecommunications, security and monitoring devices. Optional Tilt stand/handle kits and mounting brackets afford complete portability. The molded top and bottom covers have provisions for drop-in front and rear panels. Molded-in card guides and PC board mounting bosses are standard. A side expander panel is utilized on some models to create additional height for bulkier components.

DESK TOP HOUSINGS



Note: Front and rear panels are NOT included. Each enclosure requires two panels. The panels are lightly textured and easily machined. To order panels insert the letter P in front of the enclosure part #. Example: Order # for panels to fit the 150X5 would be P150X5.

Model Number		Outside Dimensions			Options	
		Height	Width	Length	Brackets	Tilt Stand
150X5	Inches	1.53	5.08	5.30	X	
	mm	38.86	129.03	134.62		
150X75	Inches	1.53	7.06	5.30	X	
	mm	38.86	179.32	134.62		
150X69	Inches	1.55	6.33	9.62		
	mm	39.37	160.78	244.34		
200XP5	Inches	2.04	5.08	5.30	X	
	mm	51.81	129.03	134.62		
200XP75	Inches	2.04	7.06	5.30	X	
	mm	51.81	179.32	134.62		
250X6	Inches	2.52	6.12	6.32	X	X
	mm	64.00	155.44	160.52		
250X86	Inches	2.52	8.10	6.32	X	X
	mm	64.00	205.74	160.52		
325XP6	Inches	3.30	6.12	6.32	X	X
	mm	83.82	155.44	160.53		
325XP86	Inches	3.30	8.10	6.32	X	X
	mm	83.82	205.74	160.53		
360XP6	Inches	3.60	6.12	6.32	X	X
	mm	91.44	155.44	160.53		
360XP86	Inches	3.60	8.10	6.32	X	X
	mm	91.44	205.74	160.53		
400XP6	Inches	4.04	6.12	6.32	X	X
	mm	102.62	155.44	160.53		
400XP86	Inches	4.04	8.10	6.32	X	X
	mm	102.62	205.74	160.53		



The 425X911 is the largest SIMCO Housing. Its rugged design makes it suitable for many applications from Industrial to Commercial to Medical fields. It is available with or without ventilation slots in top and bottom covers. Front and rear panels are included. Comes with assembly screws and rubber feet.

Model Number		Outside Dimensions		
		Height	Width	Length
425X911	Inches	4.25	9.30	10.93
	mm	107.95	236.22	277.62

FEATURES

- High-impact SIMPLAS ® material
- Lightly textured finish to resist scratches
- Molded-in card guides & Mounting bosses
- Plastite ® Screws included
- 3M ® Self-adhesive rubber feet included
- In-stock availability
- Stock colors: PC Bone Grey, Dark Grey, Black

AVAILABLE OPTIONS

- UL 94VO Flame Retardant Material
- EMI/RFI Shielding
- Custom Colors
- Secondary Machining
- Tilt Stand/Handle Kits
- Mounting Brackets
- Custom Modifications

➤ To view or download user drawings of these enclosures visit our web site at www.simcobox.com or contact customer service at numbers listed below.



ACCESSORIES

BELT CLIPS



SIMCO's BC-1 Belt/Pocket Clip is a cleverly designed one-piece molded plastic clip that is designed to install easily without secondary machining or complicated assembly parts. The one-piece clip has molded-in screw posts for positioning within existing case screw bosses without drilling or machining. Installation is completed using the same Plastite® fasteners that are used to assemble the boxes. These clips will fit some of the SATURN and ENDEAVOR Series.

BC-1	Belt/Pocket Clip
------	------------------

PC BOARD MOUNTING BOSSES



SIMCO's mounting bosses can be bonded wherever needed within an enclosure using MEK or other bonding agent. The PC board is then held in place with easy to use push-on fasteners, or removable spring clips.

PMB-125	Mounting Boss & Push-on Clip
PMB-125R	Mounting Boss & Removable Clip

PC BOARD SCREWS

These PC board screws are designed especially for use in assembling plastic components. The thread forming Plastite® screws reduce assembly time and will not strip out.

S-14	#4 x .250 Pan Head Phillips/Zinc
------	----------------------------------

TILT STANDS AND MOUNTING BRACKETS



Tilt Stand/Handle Kits and Mounting Brackets will fit some of the CHALLENGER Desk Top Housings. Tilt Stands are chrome plated steel with molded side attachment buttons. Mounting Brackets are 16 gauge CRS 1010 black polane. Hardware is included with each kit.

HK-6	6" Handle Kit
HK-86	8" Handle Kit
MBK-5	5" Mounting Bracket
MBK-5	6" Mounting Bracket
MBK-7	7" Mounting Bracket
MBK-8	8" Mounting Bracket

➤ For more information on these and other SIMCO Products visit our website at www.simcobox.com



P.O. Box 997, Avon Park, Florida 33826
Tel: (863) 452-9090 • Fax: (863) 452-6200 • 800-780-9090 • email: simco@simcobox.com



P.O. Box 997
Avon Park, Florida 33826
(863) 452-9090
Fax: (863) 452-6200
1-800-780-9090
Email: simco@simcobox.com
Website: www.simcobox.com

